

MODERNS

ON EAMES WALK

TERRACE



indoor living space:	1,979 sf
terrace:	varies sf
garage space:	466 sf

bedrooms:	2
flex space:	1
bathrooms (BA):	2
half-baths (HB):	2

Purchase Inquires:

Mollie Nelson
(916) 718 4377
mollie@thebridgedistrict.com
CA BRE broker license:
#01816885

visit: moderns-tbd.com

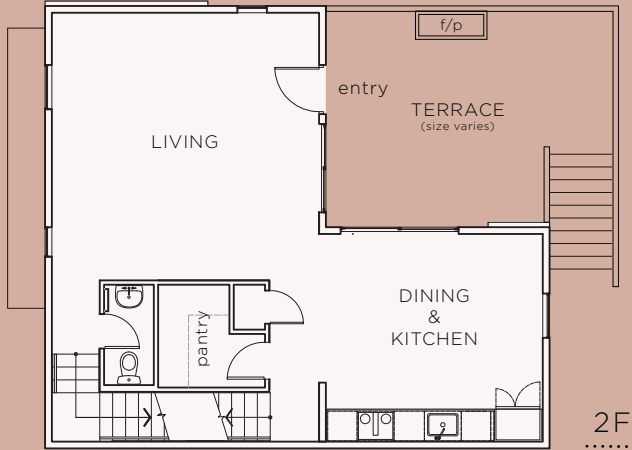
OVERVIEW: The Terrace offers the most private integration of indoor/outdoor relationships with a room-sized terrace that seamlessly connects the living/dining areas of the home in a unique spatial proposition.

UNIQUE FEATURES: Riverfront-facing private terrace with gas fireplace and a generously sized flex space with half-bath at the alley level.

three of this type: 976, 978 Riverfront and 981 Central St.

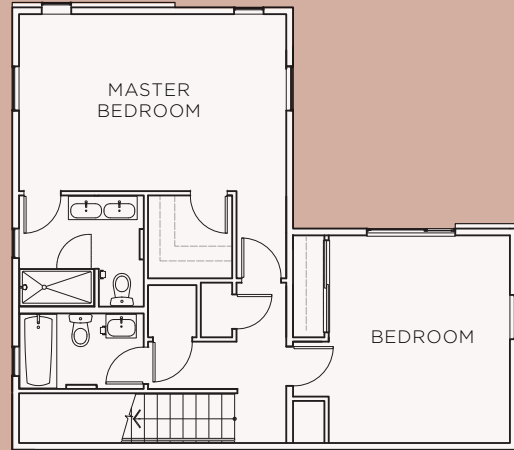
TERRACE

visit: moderns-tbd.com
 contact: Mollie Nelson
 (916) 718 4377



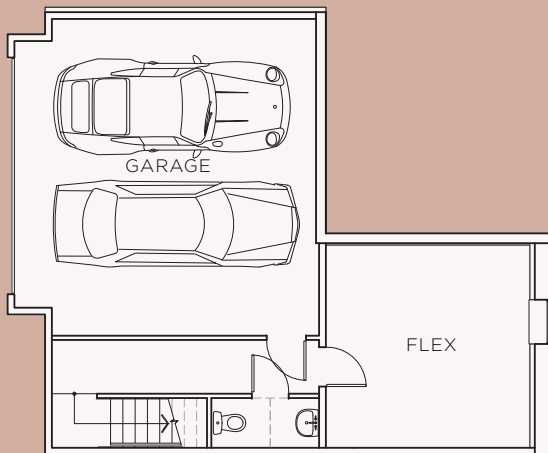
2F
.....

2F living space 799 sf
 terrace varies sf



3F
.....

3F living space 799 sf



1F
.....

1F living space 381 sf
 garage space 466 sf



The Moderns development is represented in this brochure by artist renderings. When realized, they may differ from these plans/images in square footage, color, finish details, and overall appearance.



AN EQUAL HOUSING OPPORTUNITY.