

# MODERNS

ON EAMES WALK

# RIVER TERRACE



---

indoor living space:	2,575 sf
terrace space:	varies sf
roof deck:	228 sf
garage space:	447 sf

---

bedrooms:	3
flex space:	1
bathrooms (BA):	2
half-baths (HB):	2

---

Purchase Inquires:

Mollie Nelson  
(916) 718 4377  
mollie@thebridgedistrict.com  
CA BRE broker license:  
#01816885

---

visit: [moderns-tbd.com](http://moderns-tbd.com)

**OVERVIEW:** The River Terrace offers the most private integration of indoor/outdoor relationships with a room-sized terrace that seamlessly connects the living/dining areas of the home in a unique spatial proposition.

The elevator-accessed roof deck provides dramatic views of the river frontage and the Sacramento downtown skyline in the most private of outdoor spaces available in the Bridge District to date.

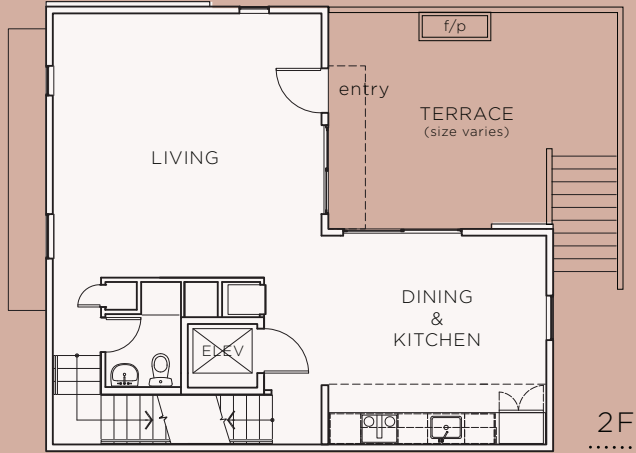
**UNIQUE FEATURES:** Riverfront-facing private terrace with gas fireplace, roof deck and elevator.

---

two residences of this type: 974 & 980 Riverfront Street

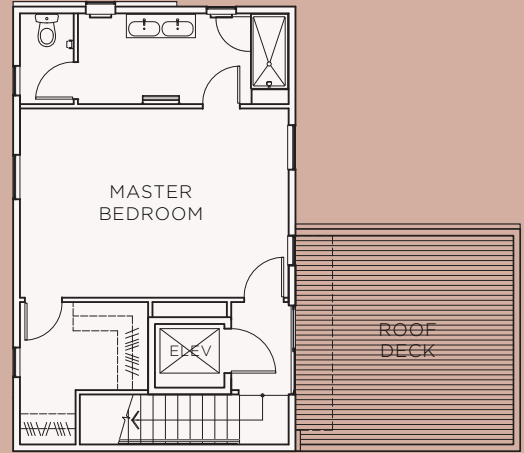
# RIVER TERRACE

visit: [moderns-tbd.com](http://moderns-tbd.com)  
 contact: Mollie Nelson  
 (916) 718 4377



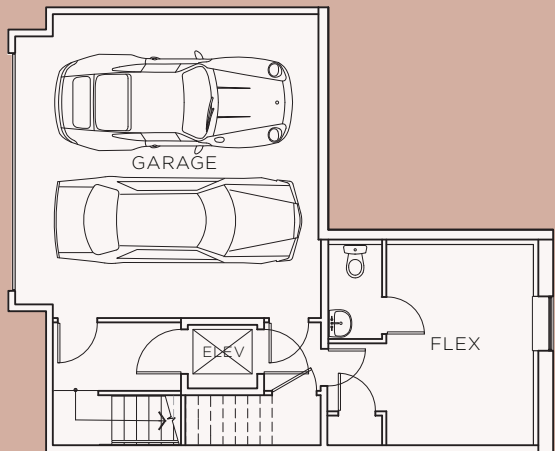
2F

2F living space ..... 799 sf  
 terrace ..... varies sf



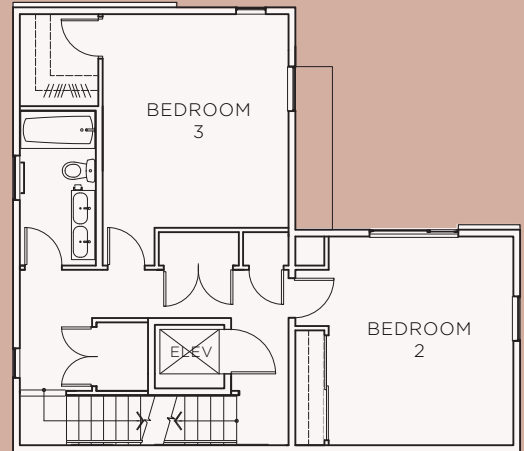
4F

4F living space ..... 571 sf  
 roof deck ..... 228 sf



1F

1F living space ..... 406 sf  
 garage space ..... 447 sf



3F

3F living space ..... 799 sf



The Moderns development is represented in this brochure by artist renderings. When realized, they may differ from these plans/images in square footage, color, finish details, and overall appearance.



AN EQUAL HOUSING OPPORTUNITY.