

# MODERNS

ON EAMES WALK

# EAMES WALK



---

indoor living space:	2,268 sf
terrace space:	200 sf
lower patio:	65 sf
garage space:	456 sf

---

bedrooms:	3
flex space:	1
bathrooms (BA):	2
half-baths (HB):	2

---

#### Purchase Inquires:

Mollie Nelson  
(916) 718 4377  
mollie@thebridgedistrict.com  
CA BRE broker license:  
#01816885

---

visit: [moderns-tbd.com](http://moderns-tbd.com)

**OVERVIEW:** The Eames Walk is prominently situated on the through-block pedestrian walk that will connect you to the Barn and the waterfront.

It features an expansive living level that is entirely north-facing and opens out onto a room-sized terrace, making the home ideal for both the art collector and the dinner party aficionado.

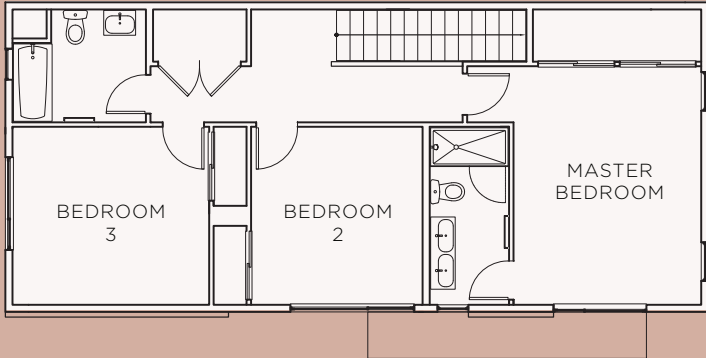
**UNIQUE FEATURES:** Gas fireplace on the outdoor terrace and a landscaped patio area adjacent to the alley level flex space.

---

two residences of this type: 963 & 964 Eames Walk

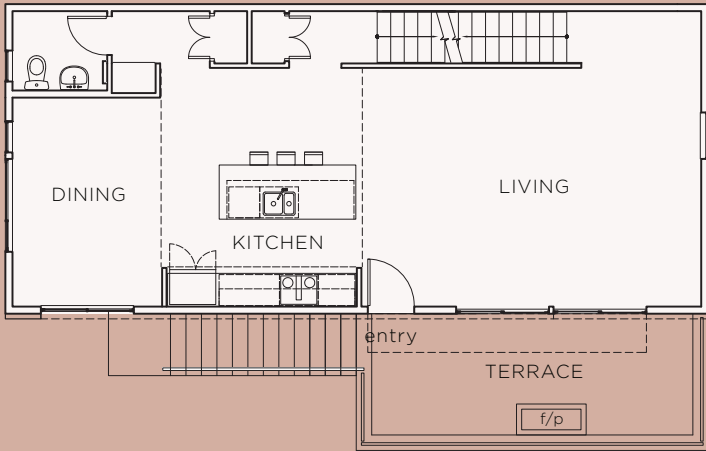
# EAMES WALK

visit: [moderns-tbd.com](http://moderns-tbd.com)  
 contact: Mollie Nelson  
 (916) 718 4377



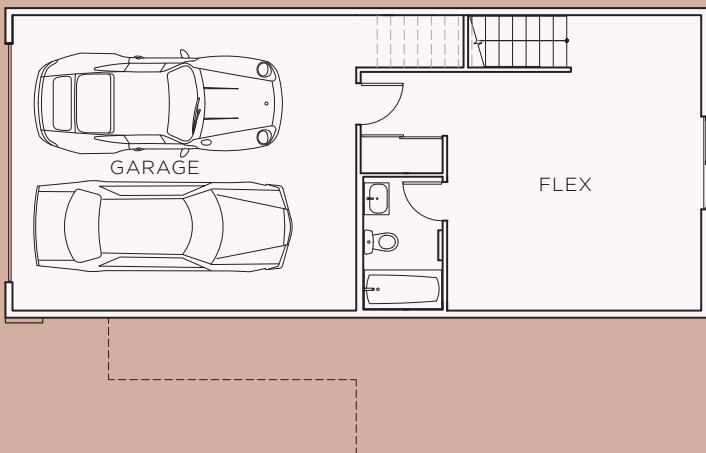
3F living space ..... 908 sf

3F  
.....



2F living space ..... 908 sf  
 terrace ..... 200 sf

2F  
.....



1F living space ..... 452 sf  
 lower patio ..... 65 sf  
 garage space ..... 456 sf

1F  
.....



The Moderns development is represented in this brochure by artist renderings. When realized, they may differ from these plans/images in square footage, color, finish details, and overall appearance.



AN EQUAL HOUSING OPPORTUNITY.