

MODERNS

ON EAMES WALK

COURTYARD



indoor living space:	1,905 sf
outdoor living space:	165 sf
garage space:	447 sf

bedrooms:	2
flex space:	1
bathrooms (BA):	2
half-baths (HB):	1

Purchase Inquires:

Mollie Nelson
(916) 718 4377
mollie@thebridgedistrict.com
CA BRE broker license:
#01816885

visit: moderns-tbd.com

OVERVIEW: The Courtyard offers a casually graceful residence that opens onto a private oasis. The groundfloor flex space connects to an intimate, but neighborly, private outdoor space ideal for relaxing or entertaining in the garden.

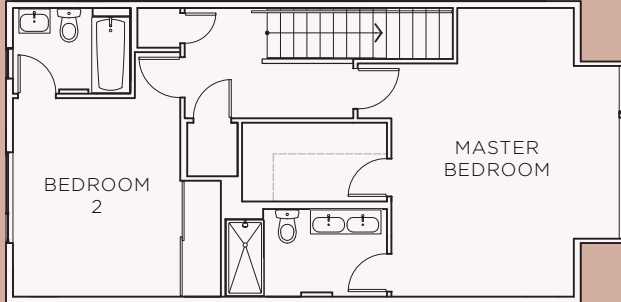
The generously-sized living level provides a open, but formal, dining space and a window seat from which to enjoy the sunlight as it is filtered through the tree canopy just outside.

UNIQUE FEATURES: Architecturally distinctive window seat and a thoughtfully integrated indoor/outdoor patio level arrangement.

eight residences of this type: 967, 968, 971, 972, 975, 976, 979, 980 Eames Walk

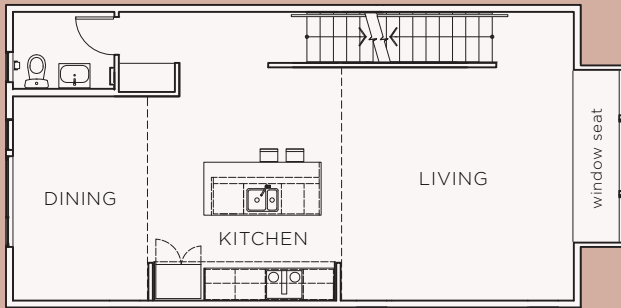
COURTYARD

visit: moderns-tbd.com
 contact: Mollie Nelson
 (916) 718 4377



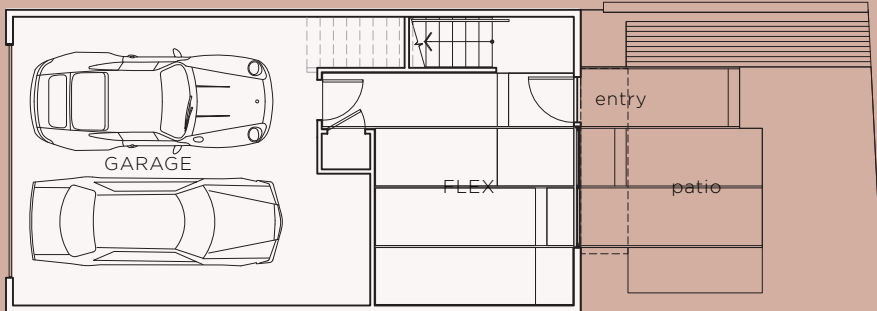
3F

3F living space 796 sf



2F

2F living space 796 sf



1F

1F living space 313 sf
 outdoor living 165 sf
 garage space 447 sf



The Moderns development is represented in this brochure by artist renderings. When realized, they may differ from these plans/images in square footage, color, finish details, and overall appearance.



AN EQUAL HOUSING OPPORTUNITY.