

MODERNS

ON EAMES WALK

CENTRAL



indoor living space: 1,697 sf
entry patio: varies sf
garage space: 475 sf

bedrooms: 2
flex space: 1
bathrooms (BA): 2
half-baths (HB): 1

Purchase Inquires:

Mollie Nelson
(916) 718 4377
mollie@thebridgedistrict.com
CA BRE broker license:
#01816885

visit: moderns-tbd.com

OVERVIEW: The Central is a neighborhood-oriented residence with a street facing flex space—a perfect launch-pad for your entrepreneurial or creative endeavor.

The living level is loft-like and spacious, purpose-built for entertaining while providing a cozy little window seat perch to soak in the afternoon sun.

UNIQUE FEATURES: Architecturally distinctive window seat and a street facing flex space.

three residences of this type: 969, 973, 977 Central Street

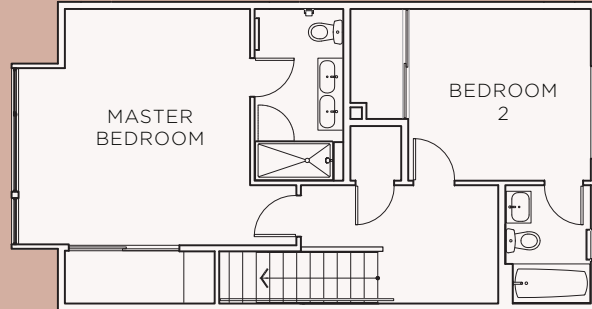
CENTRAL

visit: moderns-tbd.com

contact: Mollie Nelson

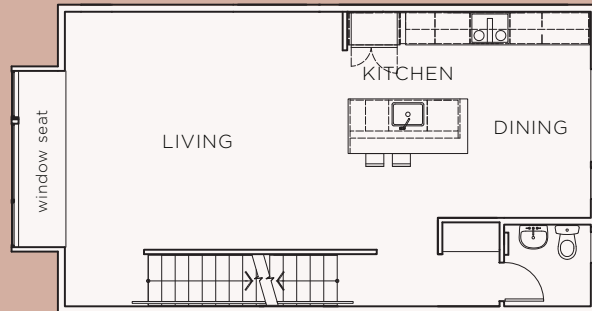
(916) 718 4377

3F living space 736 sf



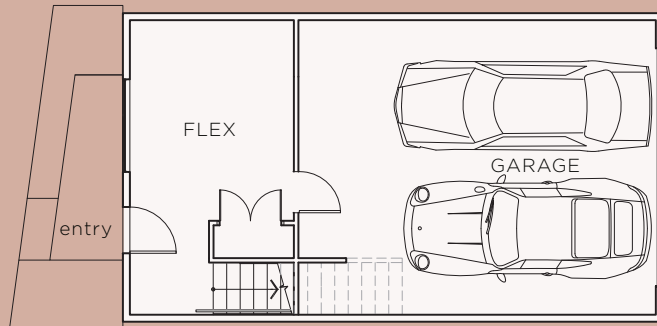
3F
.....

2F living space 736 sf



2F
.....

1F living space 225 sf
garage space 475 sf



1F
.....



The Moderns development is represented in this brochure by artist renderings. When realized, they may differ from these plans/images in square footage, color, finish details, and overall appearance.



AN EQUAL HOUSING OPPORTUNITY.