

MODERNS

ON EAMES WALK

CENTRAL +



indoor living space:	1,697 sf
entry patio:	varies sf
living-level terrace:	95 sf
garage space:	475 sf

bedrooms:	2
flex space:	1
bathrooms (BA):	2
half-baths (HB):	1

Purchase Inquires:

Mollie Nelson
(916) 718 4377
mollie@thebridgedistrict.com
CA BRE broker license:
#01816885

visit: moderns-tbd.com

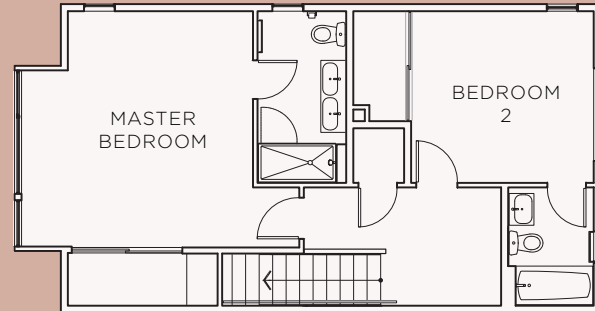
OVERVIEW: The Central is a neighborhood-oriented residence with a street facing flex space—a perfect launch-pad for your entrepreneurial or creative endeavor.

The living level is loft-like and spacious, purpose-built for entertaining while providing a cozy little window seat perch to soak in the afternoon sun.

UNIQUE FEATURES: Second entry off Eames Walk with a living level terrace. Architecturally distinctive window seat and a street facing flex space.

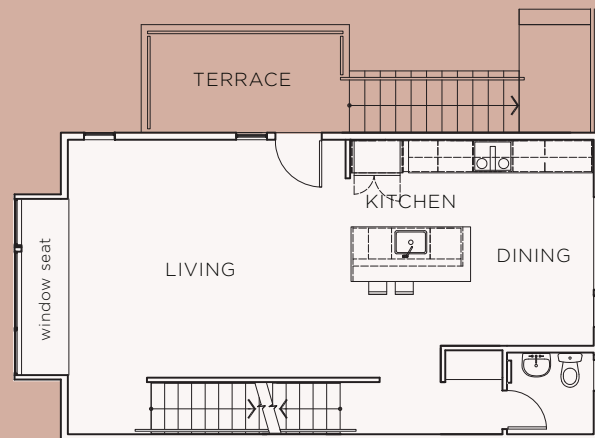
one residence of this type: 965 Central Street

3F living space 736 sf



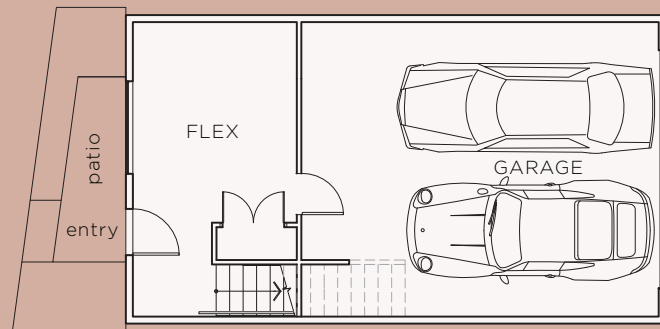
3F
.....

2F living space 736 sf
living-level terrace 95 sf



2F
.....

1F living space 225 sf
garage space 475 sf



1F
.....